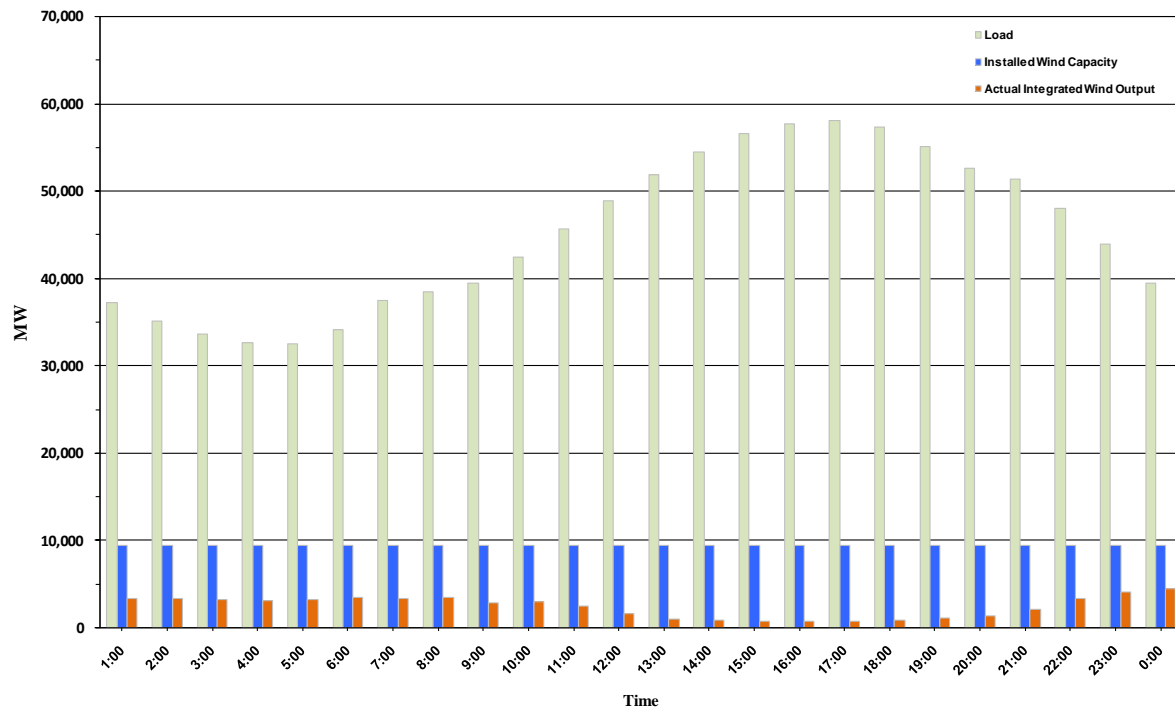




ERCOT Grid Operations Wind Penetration Report: 09/14/10

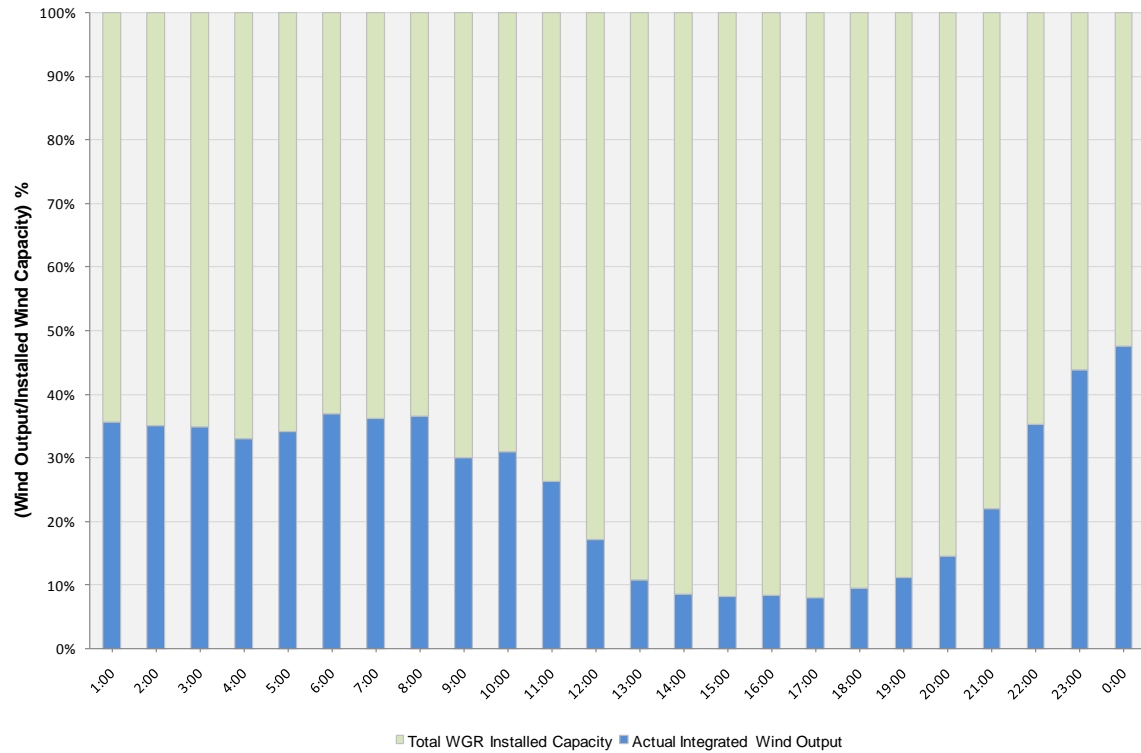
Peak Load	58,137 MW
Load Peak Hour	17
Wind Record 06/12/10	7016 MW
Max Wind value	4719 MW
Wind Peak Hour	23:53:28
Wind Penetration %	12.39

Hourly Average Actual Load vs. Actual Wind Output
09-14-2010

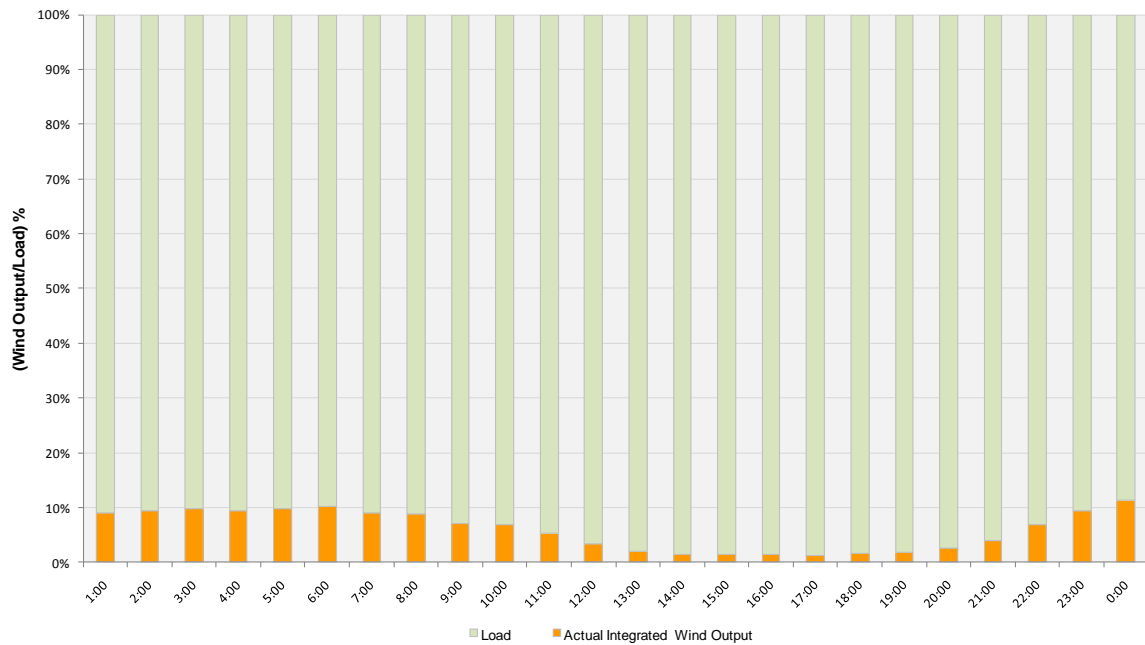




Actual Wind Output as a Percentage of the Total Installed Wind Capacity
09-14-2010



Actual Wind Output as a Percentage of the ERCOT Load
09-14-2010





ERCOT Load vs. Actual Wind Output 09/07/10 - 09/14/10

